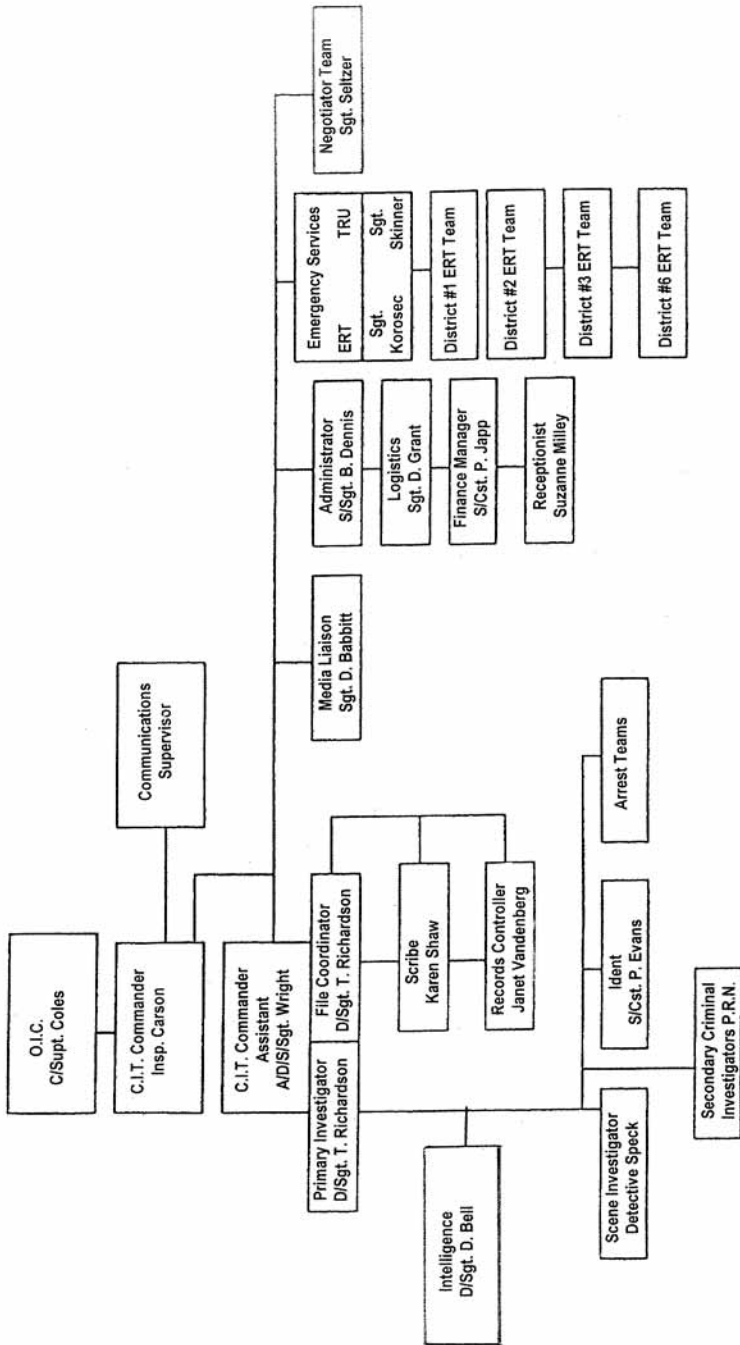
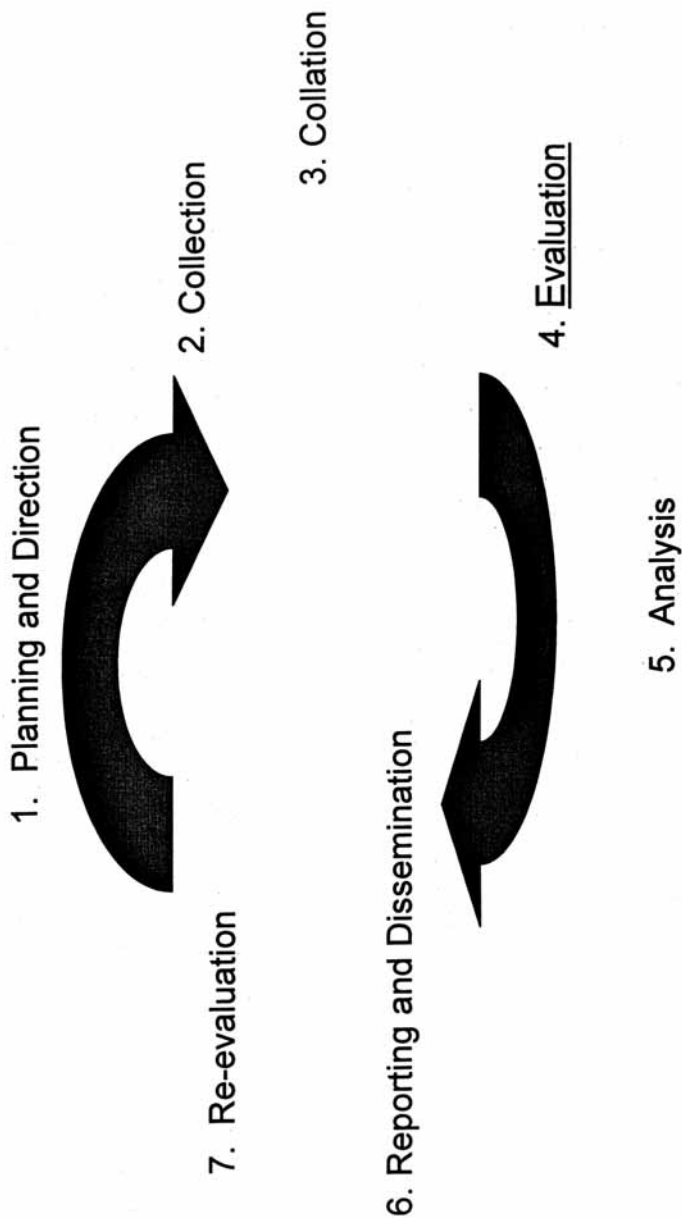


Coordinated Investigation Team (CIT) Organizational Chart



The Intelligence Cycle Diagram



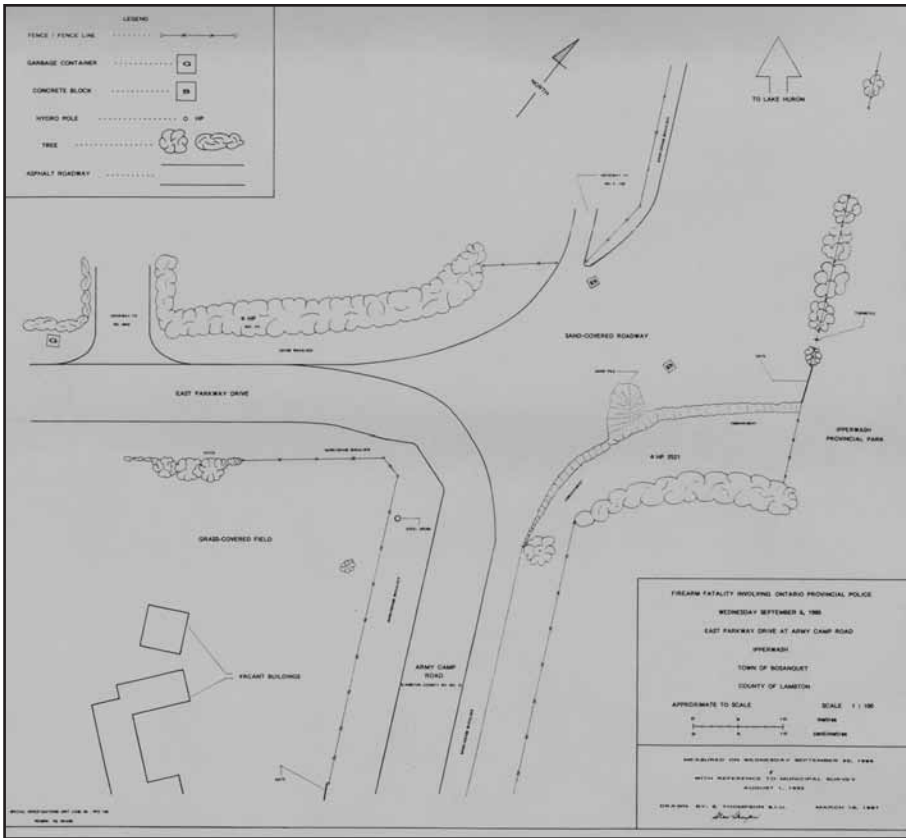


Exhibit P-23: Map of the shooting scene drawn on September 20, 1995, by Stan Thompson, SIU investigator.



Exhibit P-448: Police shield in use in 1995.

Exhibit P-448: Police helmet in use without badge numbers in 1995.



Exhibit P-340: OPP command posts with St. John Ambulance markings in use in 1995. These two vehicles were used during the Ipperwash confrontation.



Exhibit P-24-photo 19: The car belonging to Pierre George that transported Dudley George to the Strathroy Hospital after the shooting.



Exhibit P-24-photo 44: Car belonging to Warren George that the OPP was looking for after the shooting.



Exhibit P-24-photo 46: Close-up of driver side bullet holes in Warren George's car.

Exhibit P-24-photo 36: Close up of the damage caused by a bullet fired at the school bus driven by Nicholas Cotrelle, 16 years old in 1995.



Exhibit P-131: A female OPP constable in battle gear confronts Tina George the day after the shooting. The scene was captured by a photographer from the Toronto Sun newspaper on September 7, 1995.



Exhibit P-24-photo 4: The scene of the confrontation and the shooting of Dudley George, facing west on East Parkway Drive. The sandy parking lot is on the right, Army Camp Road on the left.



Exhibit 24—photo 21: The burnt out store at the Provincial Park.



Exhibit 1495: One of the T-shirts that OPP members had made after the 1995 incident.



Exhibit P-458: Another T-shirt made for OPP members after the incident.



Exhibit P-458: Mugs commissioned by OPP members.